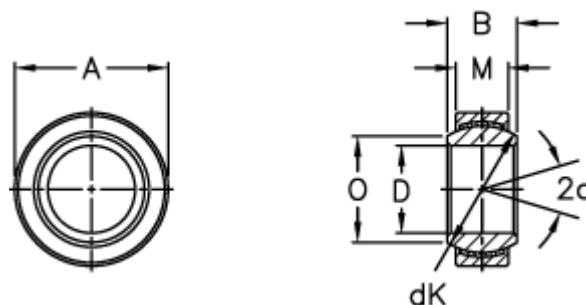


Article number: 03441110

Description: Fluro Rod end GE 110EC-2RS

Measures



A = 160 0 -0,025

B = 70

D = 110 0 -0,020

dK = 140

Dynamic load C (kN) = 1230

M = 55

O = 121.2

Static load C0 (kN) = 2460

Tilt angle = 6

Weight = 4700